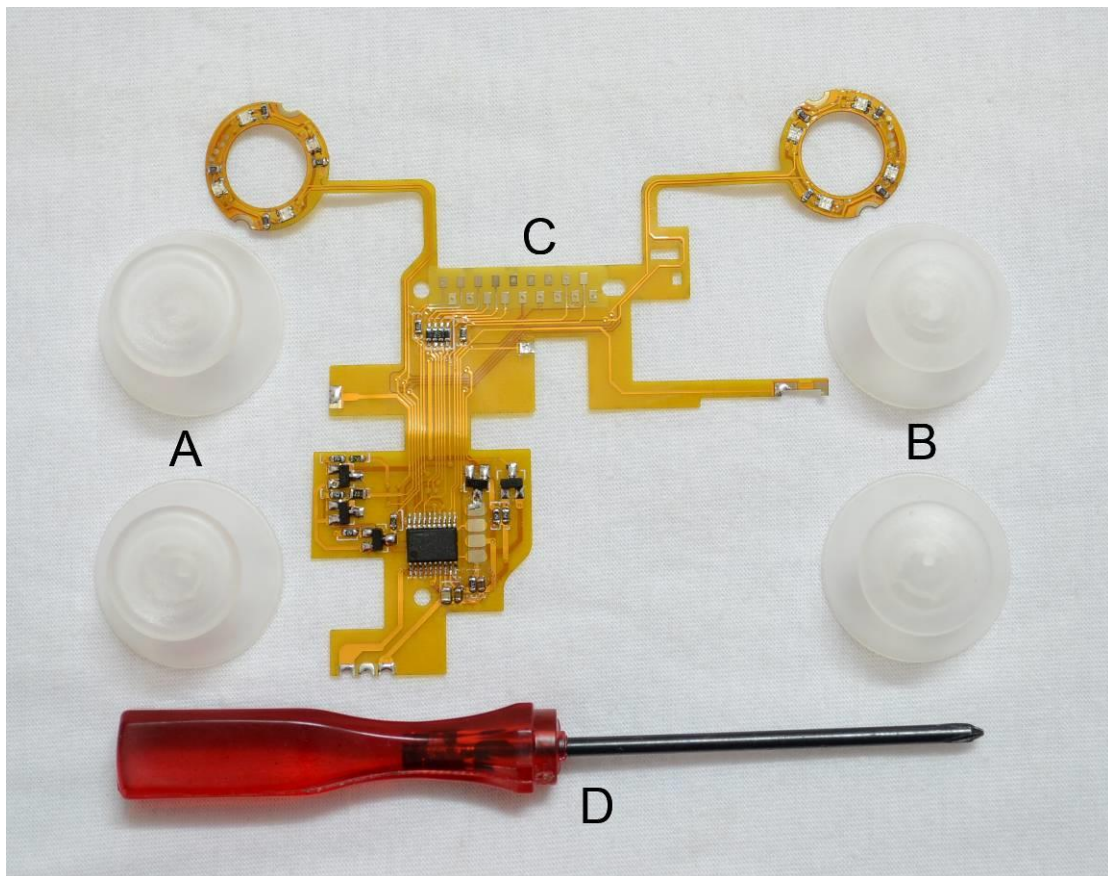


MaxColor Dream stick for PS 4

Installation manual

1. What is included in the package.

A : concave thumbsticks x2pcs B: convex thumbsticks x2pcs C: Soft PCB x 1pcs D: screw driver x 1 pcs



2. How to install

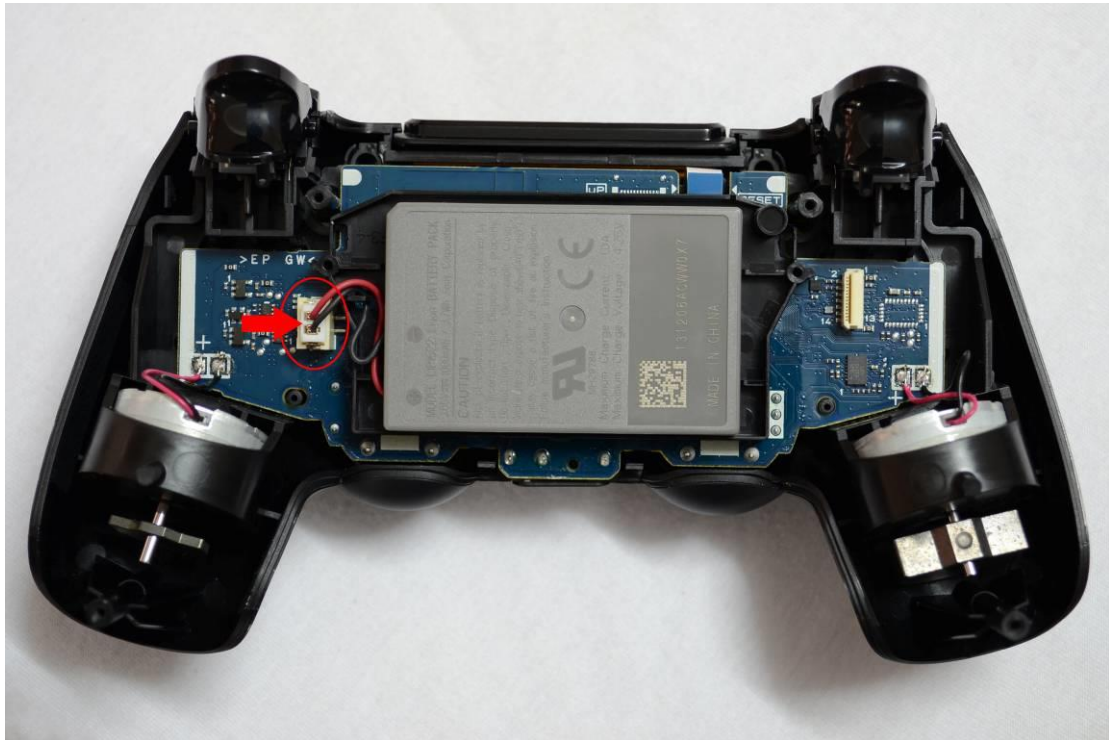
<1> Remove 4 screws



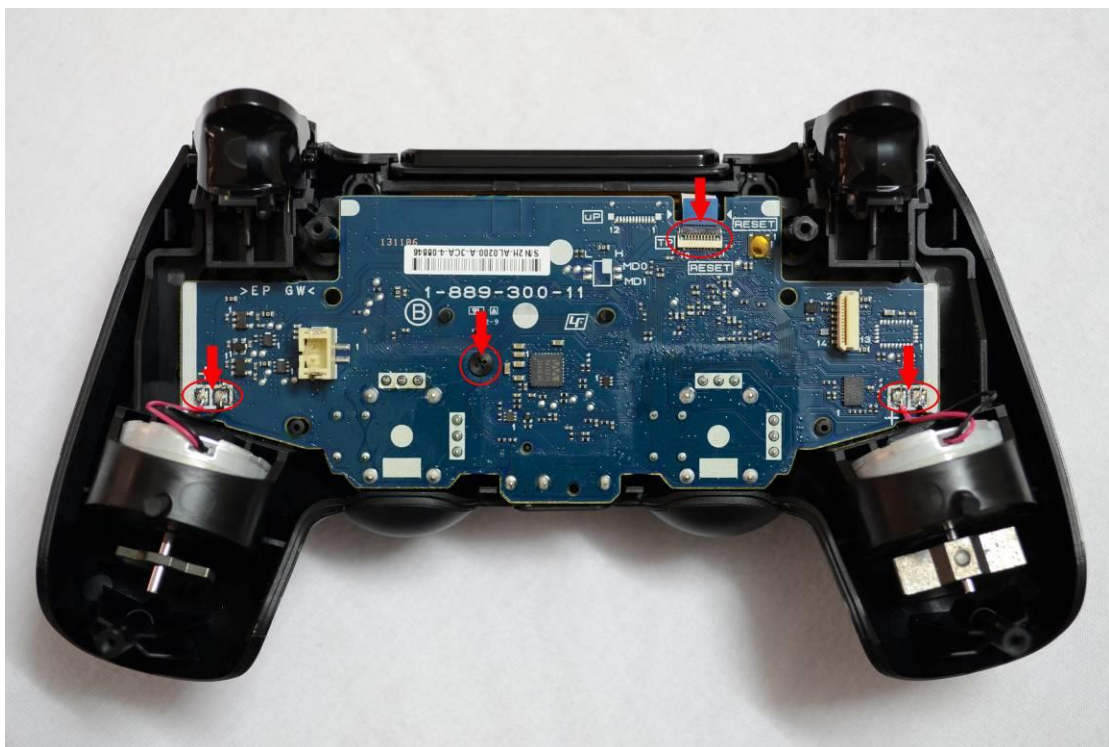
<2> Remove the soft flat cable.

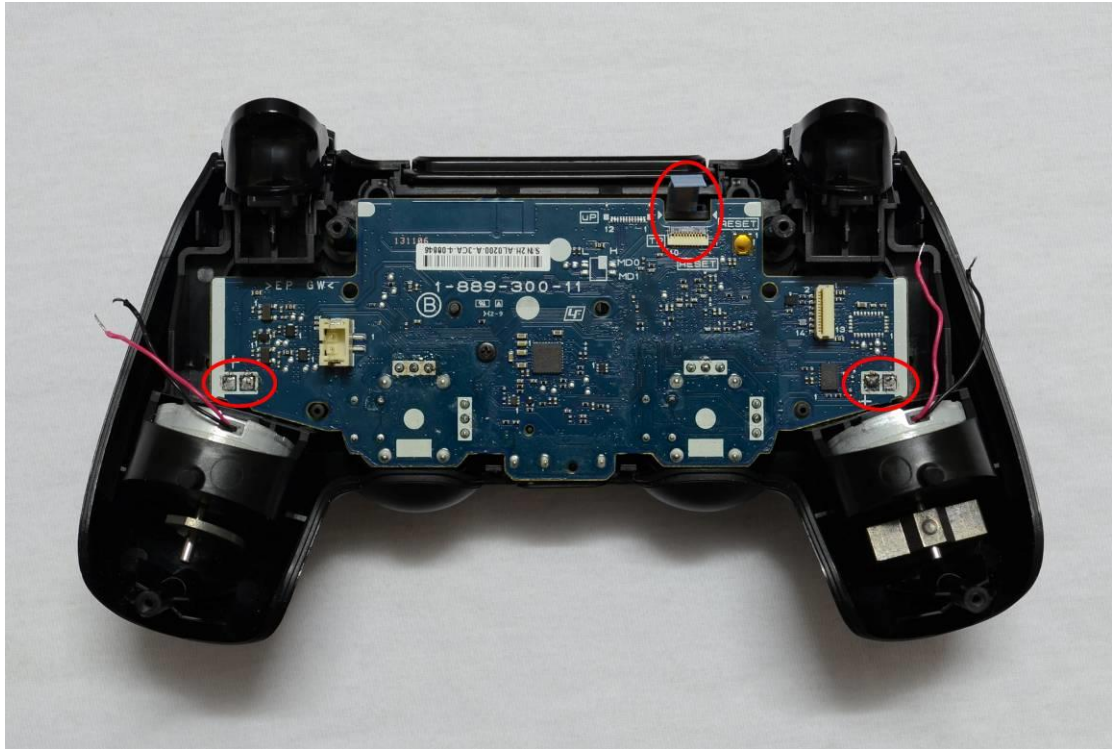


<3> Unplug the cable and remove the battery pack.

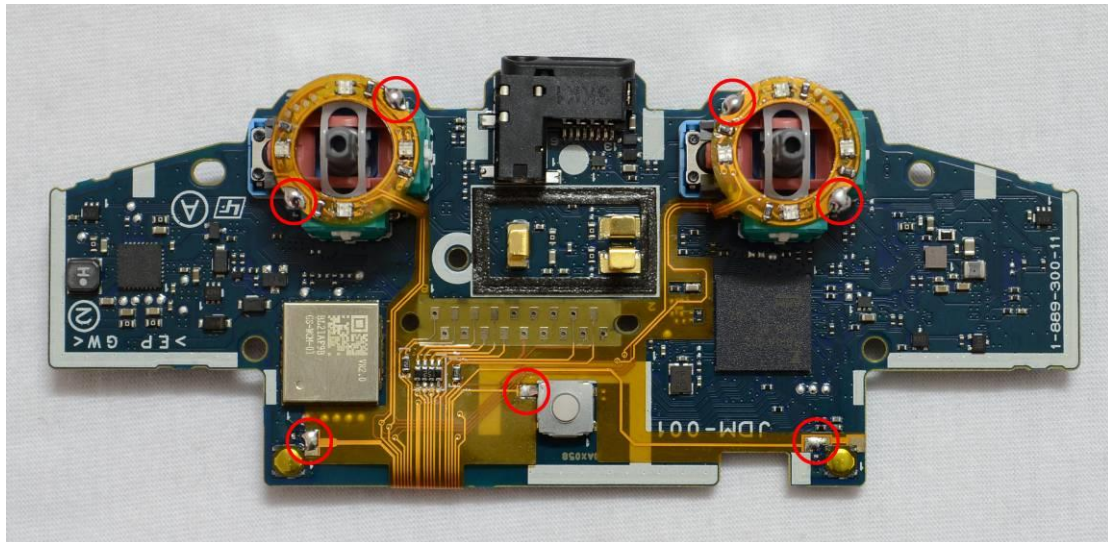


<4> Remove the solder and unplug the flat cable along with the 4 wires. Unscrew the screw and take apart the PCB.

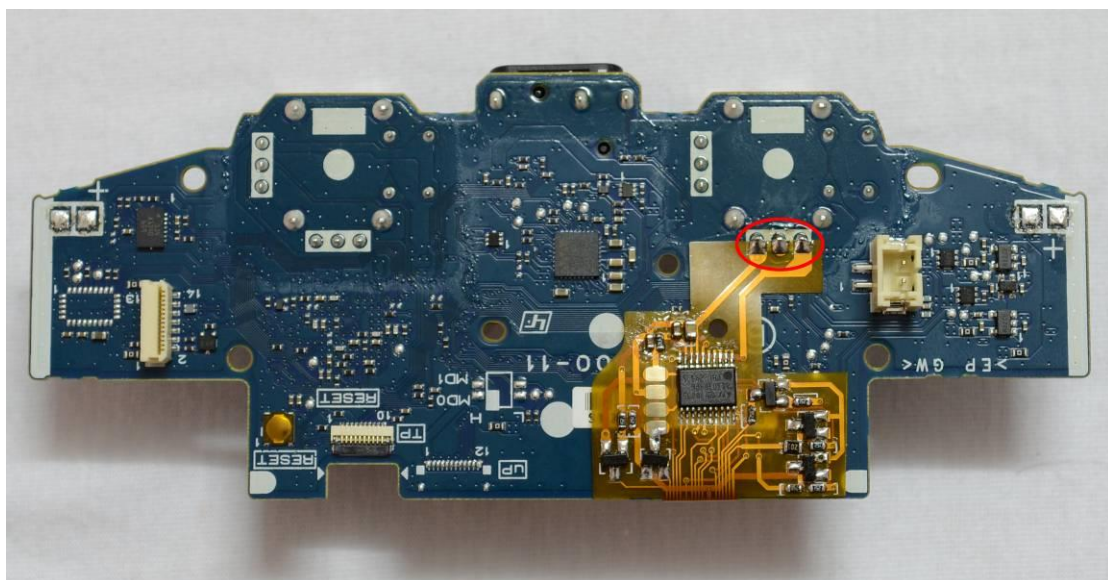




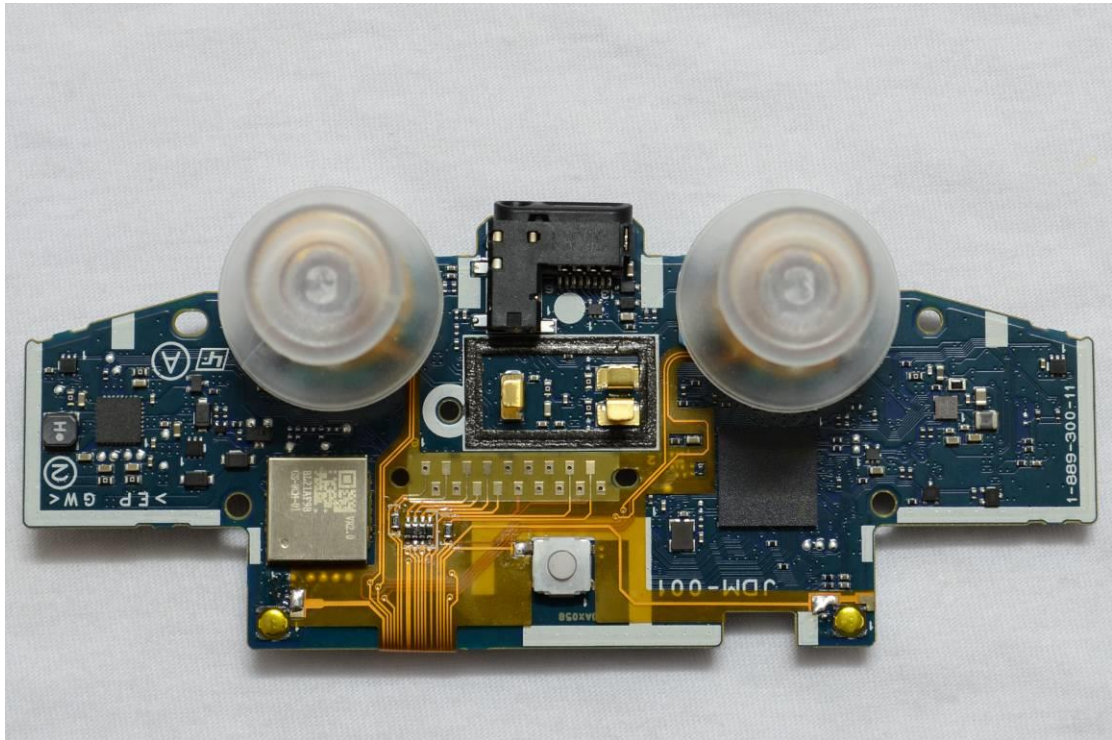
<5> Shown in the picture below, place our soft PCB onto the Front side of the controller PCB, and soldering the 7 points.



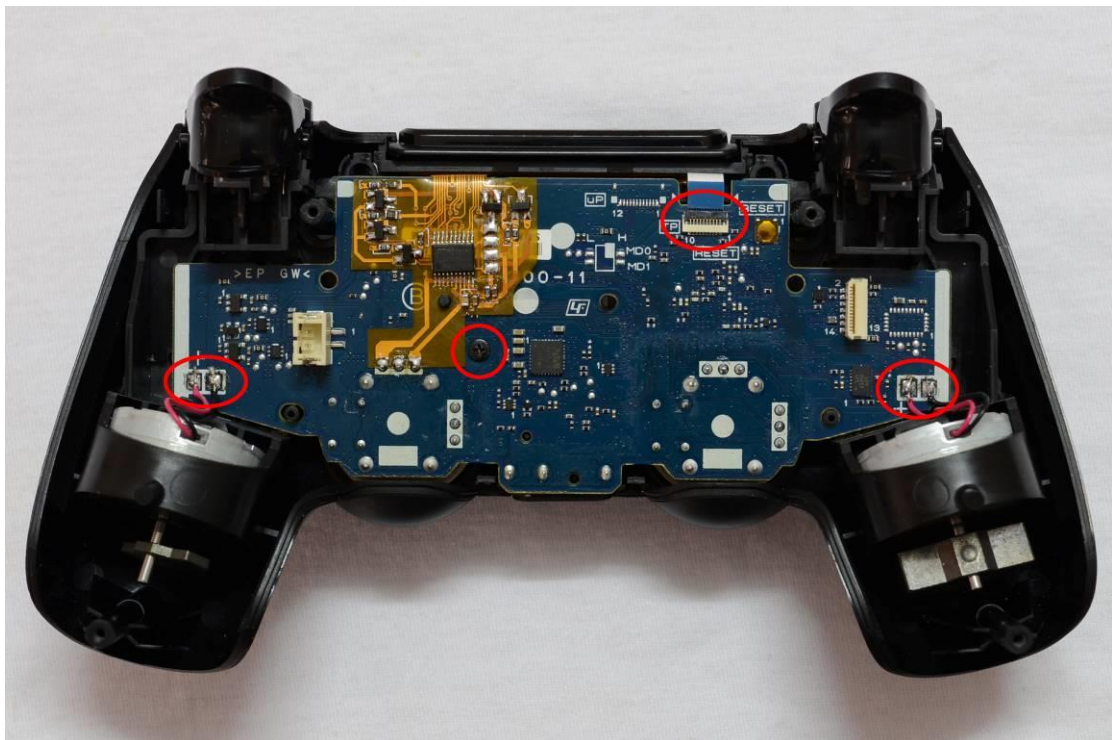
<6> Gently flip the excess soft PCB to the back side of controller PCB and solder the 3 points.



<7> After soldering and placing the soft PCB, put the thumb sticks on.



<8> Place the whole set of controller PCB onto the PS 4 controller front shell, solder the 4 motors' wires (Note: check the color of the wire carefully before soldering), connect the flat cable to the PCB , tighten up the screw.



<9> Refer back to step 3 to install the battery pack, and refer to step 2 to plug in the flat cable into PCB , finally refer to step 1 to close the bottom part of the controller shell and tighten up 4 screws.